

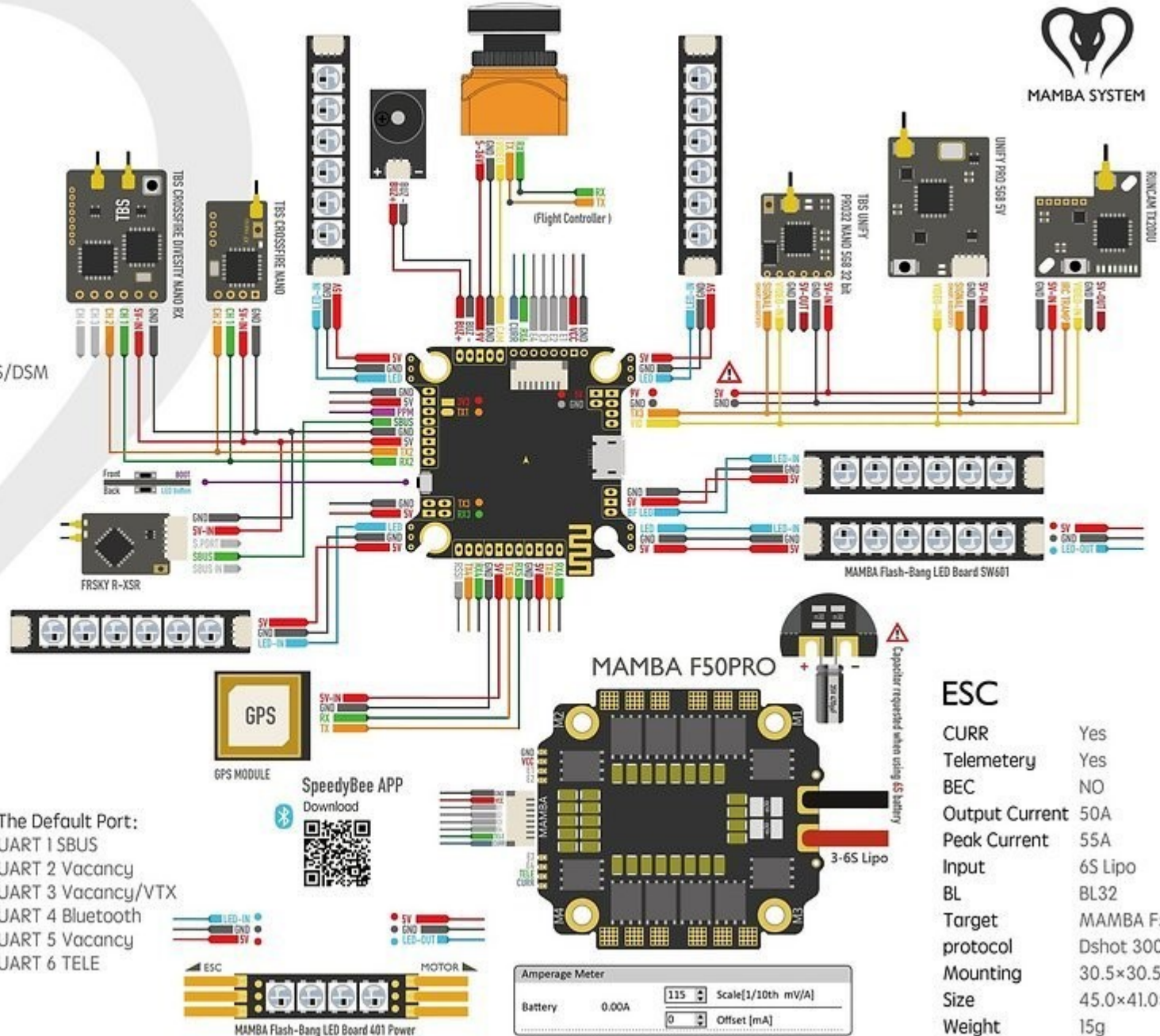
# MAMBA STACK

FC :MAMBA F722S  
ESC:MAMBA F50PRO



## Stack Specifications:

MCU	STM32F722RET6
Frequency	216MHz
IMU	MPU6000
OSD	AT7456E
Blackbox	16M Memory
Uarts	6 Set
Receiver	TBS/PPM/SBUS/IBUS/DSM
RSSI Pad	Yes
Buzzer Pad	Yes
CURR Pad	Yes
Motor	4 Set
BEC 3.3V	YES/0.5A
BEC 5V	Yes/2.5A
BEC 9V	Yes/2A
MB LED	Yes
BF LED	Yes
Bluetooth	Yes
Input	6S Lipo
VTS Protection	Yes
Soft	Betaflight
Target	MAMBAF722
Mounting	30.5×30.5mm,∅ 3
Size	41.5×41.5×7.5mm
Weight	7.5g
Web:	www.diatone.us



The Default Port:  
UART 1 SBUS  
UART 2 Vacancy  
UART 3 Vacancy/VTX  
UART 4 Bluetooth  
UART 5 Vacancy  
UART 6 TELE

## ESC

CURR	Yes
Telemetry	Yes
BEC	NO
Output Current	50A
Peak Current	55A
Input	6S Lipo
BL	BL32
Target	MAMBA F50 PRO
protocol	Dshot 300/600/1200
Mounting	30.5×30.5mm,∅ 3
Size	45.0×41.0×6.5mm
Weight	15g

