

MAMBA STACK

FC :MAMBA DJI F405 MK2
ESC:MAMBA F40_BLS



Stack Specifications:

MCU	STM32F722RET6
Frequency	216MHz
GYRO	MPU6000
OSD	AT7456E
Blackbox	16M Memory
Barometer	Yes
Uarts	6 Set
Receiver	TBS/SBUS/IBUS/DSM
I2C	Yes
RSSI Pad	Yes
F.Port	Yes
Buzzer Pad	Yes
CURR Pad	Yes
ESC Signal	4 Set
BEC 3.3V	0.5A
BEC 5V	3A
BEC 9V	3A
MB LED	Yes
BF LED	Yes
Input	6S Lipo
TVS Protection	Yes
Soft Ware	Betaflight
Mounting	30.5x30.5mm/M3
Size	38x40x7.5mm
Weight	9.5g

Web: www.diatone.us

Target: MAMBAF405US_I2C

Main firmware STM32 F405

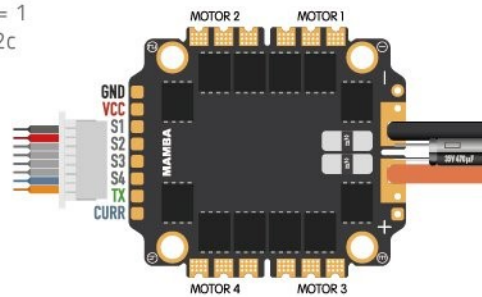
Config file MAMBAF405US_I2C

The Default Port :

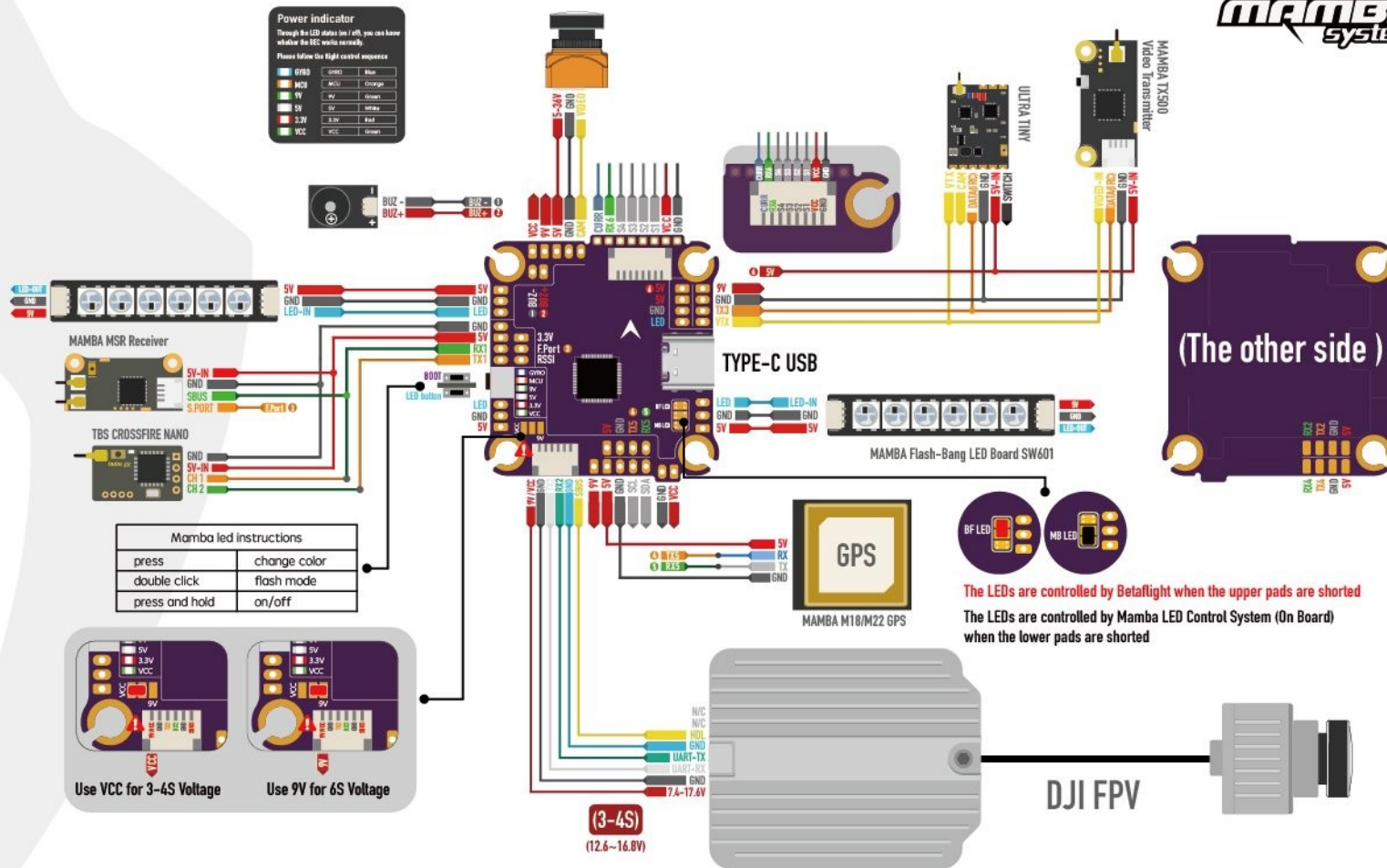
- UART 1 Receiver
- UART 2 DJI
- UART 3 VTX
- UART 4 Vacancy
- UART 5 F.Port
- UART 6 TELE



**When Using Compass Magnetometer,
Following Command:**
set mag_i2c_device = 1
set mag_bustype = i2c



MAMBA F40_BLS ESC



⚠ Capacitor requested when using 6S battery

Amperage Meter	
Battery	0.00A
	80 Scale[1/10th mV/A]
	0 Offset [mA]

ESC

CURR	Yes
Output Current	40A
Peak Current	50A
Input	3-6S Lipo
BLheli	BLheli 5
Target	CH40
Protocol	Dshot 300/600
Mounting	30.5x30.5mm, Ø 3
Size	44.5x40.0x6.8mm
Weight	14g